

Creating a Percent Change Chart for Comparisons Using Trading View

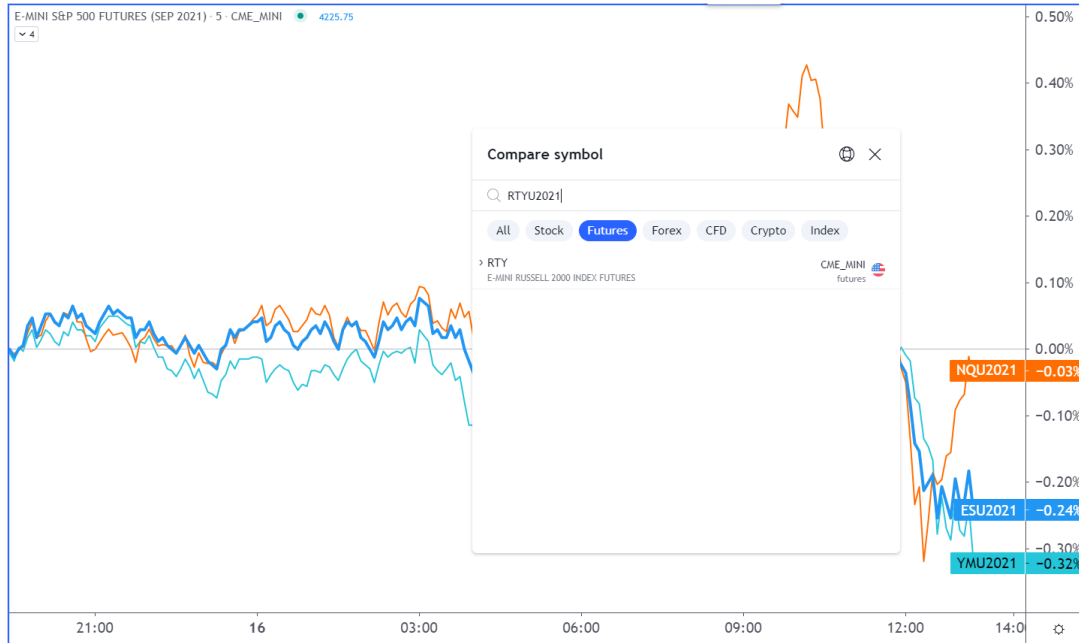
Begin with a chart of one of the securities. Change it to a line chart by using the icon next to the time frame at the top of the chart.



Then click “Compare” at the top of the chart.



Enter the symbol you want to compare, and press enter. Repeat for each symbol you want to add. When finished, click the X at the top right of the box.




NQU2021, CME_MINI ✕

Inputs **Style**

Style: Line

Price Source: Close

Type: Simple

Line: 

Price Line

Override Min Tick: Default

Defaults Cancel Ok

To change the color and thickness of each security, either double click on the line of that security or right click on the same line and select, "Settings." Repeat this for each security.

Chart settings ✕

Symbol Symbol Name Label

Status line Symbol Last Price Label

Appearance Symbol Previous Day Close Price Label (Intraday Only)

Trading Bid and Ask Labels

Events Pre/Post Market Price Label

High and low price labels

Average close price label

Indicator Name Label

Indicator Last Value Label

Financials Name Label

Financials Last Value Label

No Overlapping Labels

Countdown To Bar Close

Currency

Plus Button

Apply to all Cancel Ok

NQU2021	-0.16%
ESU2021	-0.34%
YMU2021	-0.43%
RTYU2021	-0.81%

To add the name labels to the lines, right click on the white space in the chart and go to settings. Under "Scales," select "Symbol Name Label."

The study zero's out on the hard left edge so you will have to move the margin and resize the chart. It is easier if you put a vertical line where you want the study to begin.

